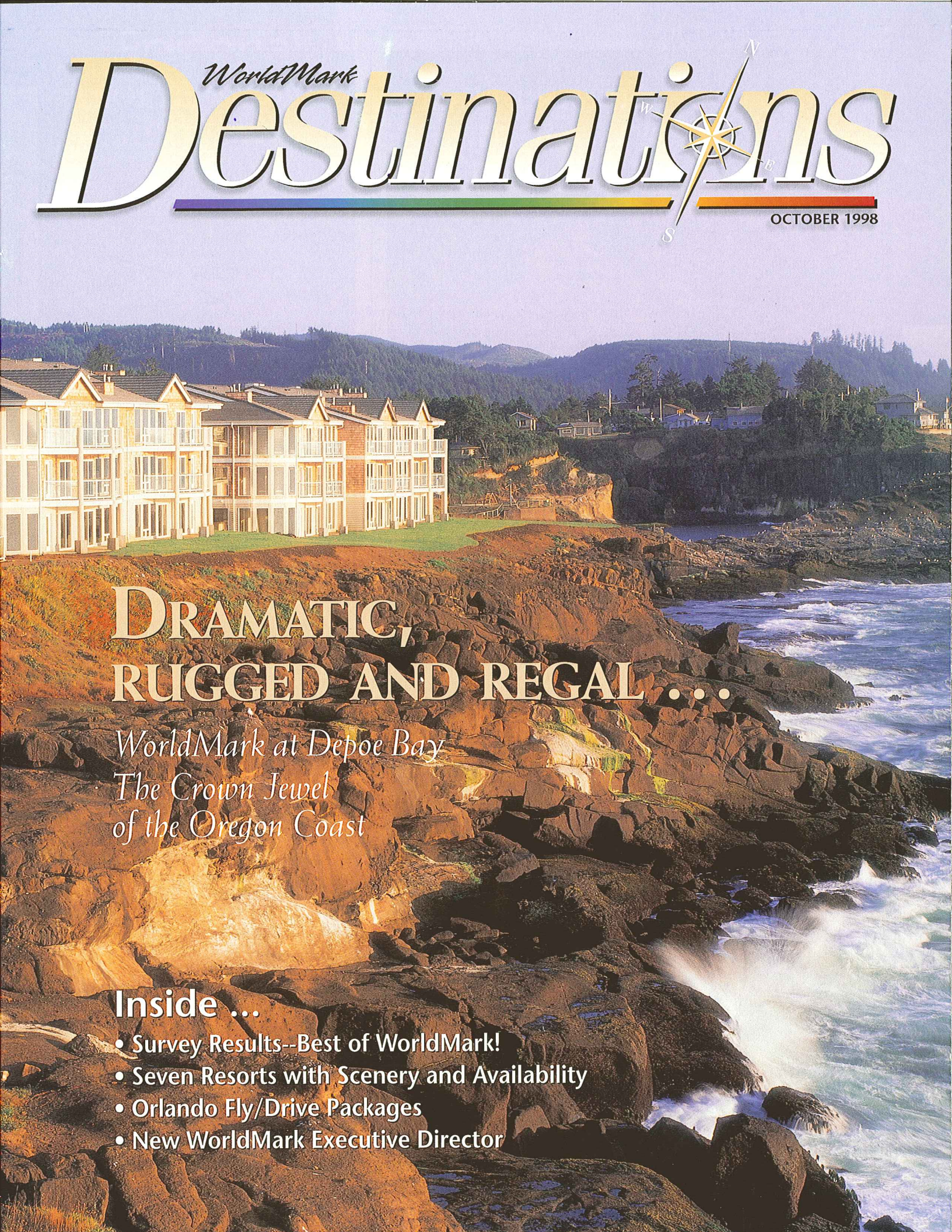




WorldMark **Destinations**

OCTOBER 1998



DRAMATIC, RUGGED AND REGAL ...

*WorldMark at Depoe Bay
The Crown Jewel
of the Oregon Coast*

Inside ...

- Survey Results--Best of WorldMark!
- Seven Resorts with Scenery and Availability
- Orlando Fly/Drive Packages
- New WorldMark Executive Director

Picture this: You're standing on a ledge jutting 100 feet above the ocean, gazing over the rolling surf of the blue-green Pacific Ocean, the waves crashing against the rocks below. Within 50 yards of the shore, a pod of California gray whales is feeding beyond the kelp beds. This is the Oregon Coast the way you always dreamed it would be. There's no other place like this on earth—and now it's *your* place.

WorldMark at Depoe Bay, located just north of the charming, maritime village by the same name, is the Oregon Coast's newest and most magnificent vacation spot. The resort's location showcases the Oregon coastline at its best: rugged rock faces, churning whitecaps, soaring seabirds, and a 180-degree panoramic sweep of the Pacific Ocean.

Fifty-four units are scheduled to become part of WorldMark's resort collection in April of next year. But you may not have to wait until then to visit this jewel of a resort. Trendwest Resorts is making select units available now, in a special rental program offered only to WorldMark Owners. To take advantage of this special program, call your Vacation Planning Center. In April, when these units become part of the regular WorldMark system, they will be available to book using your vacation credits.

After a day of hiking headlands and beaches, or exploring the local shops, treat yourself to a relaxing soak in one of the resort's two jacuzzis—one indoor and one outdoor. If you're lucky enough to be staying in a two- or three-bedroom condominium, your unit is also equipped with a jetted tub in the master suite. Each condo has a gas fireplace and fully-equipped kitchen. But the clincher is the spectacular panoramic view from virtually every unit. You'll find two swimming pools, as well (again, one indoor and one outdoor). If tennis is your sport, you'll enjoy great play right at the resort. The recreation facilities also include exercise equipment, a video arcade and children's play area.

Owners have continually asked for opportunities to spend more vacation time in WorldMark-quality accommodations on the Oregon Coast. Due to this demand, Trendwest Resorts is developing a fractional ownership program for the

DRAMATIC, RUGGED AND REGAL...

*WorldMark at Depoe Bay
The Crown Jewel
of the Oregon Coast*



OREGON

*WorldMark at
Depoe Bay*

Depoe Bay resort that will be initially offered only to WorldMark Owners. Fractional ownership guarantees

the buyer two or more weeks in a specific condominium each year. This will be Trendwest's first venture into fractional ownership. Details on this innovative program

will be announced soon. Not only will WorldMark Owners be the first to have the opportunity to purchase these fractional ownerships, Trendwest is

also planning to offer you a significant discount. Ultimately, these fractional ownerships will be offered to the general public at a higher price.

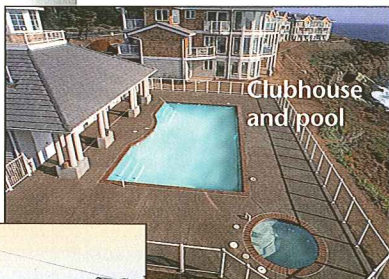
If you've been to the Central Oregon Coast, we don't have to convince you to vacation here—this coast sells itself. But for those who haven't had the opportunity to explore this scenic length of Highway 101, there are towns that exemplify the essence of

what this area is all about. From Lincoln City to Newport, the entire stretch is just 25 miles—the most magnificent little stretch of coast you'll find anywhere.

Grab some taffy at one of Lincoln City's candy shops and fly a kite on the 7 1/2 miles of beach that fronts this seaside town—the "Kite Capital of the World." In October, Lincoln City plays host to the world's premier kite flying event: the Fall International Kite Festival. When it comes to shopping, Lincoln City has it all: gift shops, galleries and antique treasures, in addition to the ever-popular outlet stores.

Three miles south of Lincoln City is Salishan, the oldest and finest destination resort on the Oregon Coast (WorldMark at Depoe Bay, of course, is the *newest* and finest). Its 750 acres include one of the Northwest's most popular 18-hole golf courses, with pine-lined fairways and lush rolling greens.

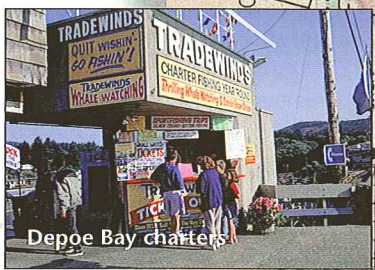
Hiking in old-growth forest is a special treat—one that can't be found just anywhere. The timber-sloped Siuslaw National Forest encompasses 630,000 acres that meet the ocean and extend along the shore. Here sunlight filters down through ancient towering trees to a forest floor that is naturally quiet, offering soulful hikes. The Siuslaw National Forest also



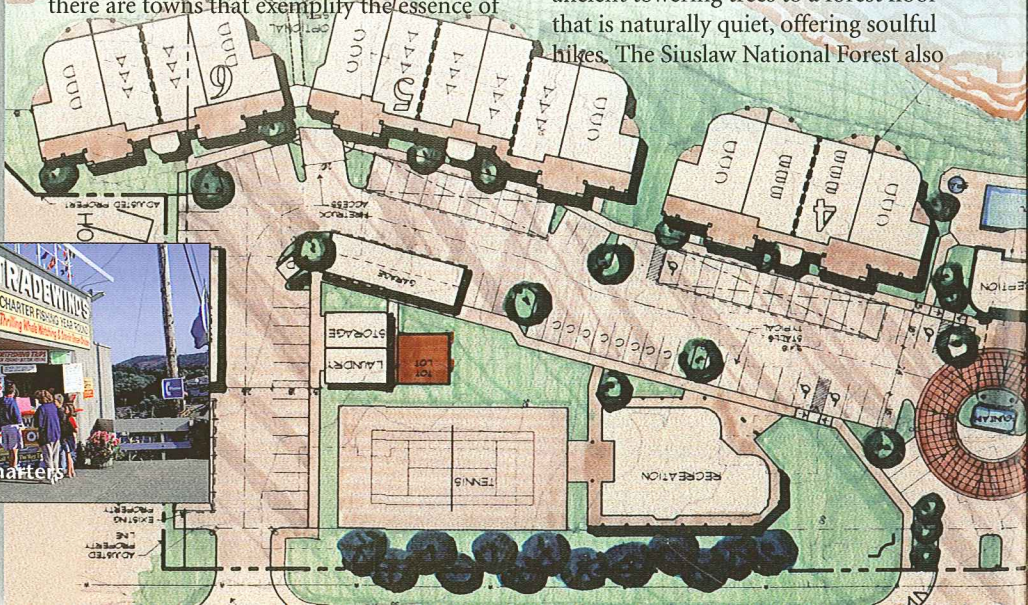
Clubhouse and pool



Tennis, anyone?



Depoe Bay Charters



In Focus



for a rest before pushing on to or migrating north from Baja. Thus the town proudly sports the title "Whale-Watching Capital of the Northwest." Much of the year you can see

gray whales lolling about just outside the harbor. Depoe Bay is the world's narrowest navigable harbor entrance—only 33-feet-wide at low tide, 47-feet-wide at high tide. The narrowness of the entrance can make it dangerous



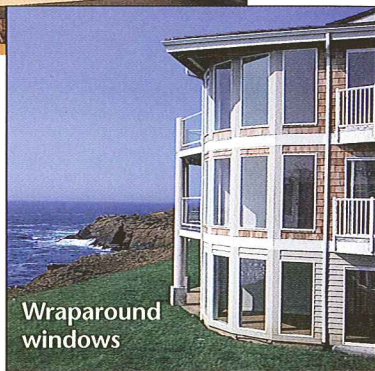
Panaramic views

includes 46 miles of public beach, lakes and streams.

Just south of Lincoln City is the D River Wayside. The D River connects Devil's Lake with the Pacific Ocean, and appears in the *Guinness Book of World Records* as the world's shortest river at only 120 feet in length! D River Wayside is also the hot spot for kite enthusiasts on the Central Coast. Two major kite festivals are held here each year, but on any breezy weekend you can find people flying their colorful creations. Several kite-flying records have been captured here.

Gleneden Beach is home to your WorldMark at Gleneden resort, and a wonderful beach for sandcastle building, kite flying and beachcombing. Exploring tide pools is a pleasurable pastime—discovering starfish, sea anemones, small crabs, sea urchins, and many other interesting creatures. All you have to do is squat down to look for these treasures—but don't touch! The rule here: enjoy the Oregon Coast to the fullest, but leave it and its inhabitants undisturbed. Right next door to your WorldMark resort is Gleneden Beach State Park. This popular day-use park offers sheltered picnic facilities and wheelchair access.

The colorful village of Depoe Bay is known as the favorite spot of whales to stop



Wraparound windows

to navigate. It is so dangerous, in fact, that the local Coast Guard crew is kept busy answering some 400 distress calls each year. Visitors watch in awe as vessels make their way through the channel leading under Highway 101, known locally as "shooting the Hole."

Just offshore, the Spouting Horns shoot geysers of saltwater into the air through crevices in basalt rock cliffs.

Depoe Bay is filled with nautical gift shops, art galleries and a variety of pubs and eating establishments. The town is known for its family-friendly atmosphere. For a taste of the seafaring life, take your gang out for a sightseeing cruise. There are several charters out of Depoe Bay and Newport, 15 miles to the south. Both towns offer whale-watching excursions and educational ecotours.

Continuing south, the highway climbs 450 feet to Cape Foulweather, named by Captain Cook on a day of particu-

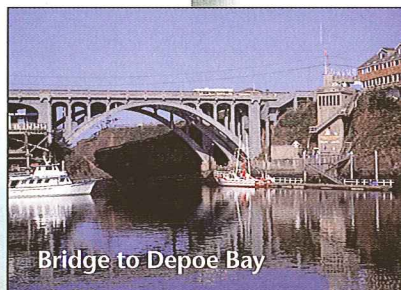
larly inclement weather in 1778. Winds over 100 mph are not uncommon here. On the edge of Cape Foulweather is Otter Rock, and an area that Cook found intriguing—Devil's Punchbowl. Devil's Punchbowl is a collapsed sea cave that churns with rushing water when the tide is right. This is the coast's most photographed seascape. You'll also find a popular gift shop here.

Yaquina Head Lighthouse is another often-photographed attraction. Built in 1873, it stands on an outcropping of rock just north of Newport. The thousands of small penguin-like birds you see on the rocks off the head are common murre. The lighthouse is open for tours and the tidepools are filled with sea life. The tidepools are wheelchair-accessible, and there is an observation deck that's great for watching the whales, seals and birds. A two-mile hiking trail also offers postcard-perfect views of the coast.

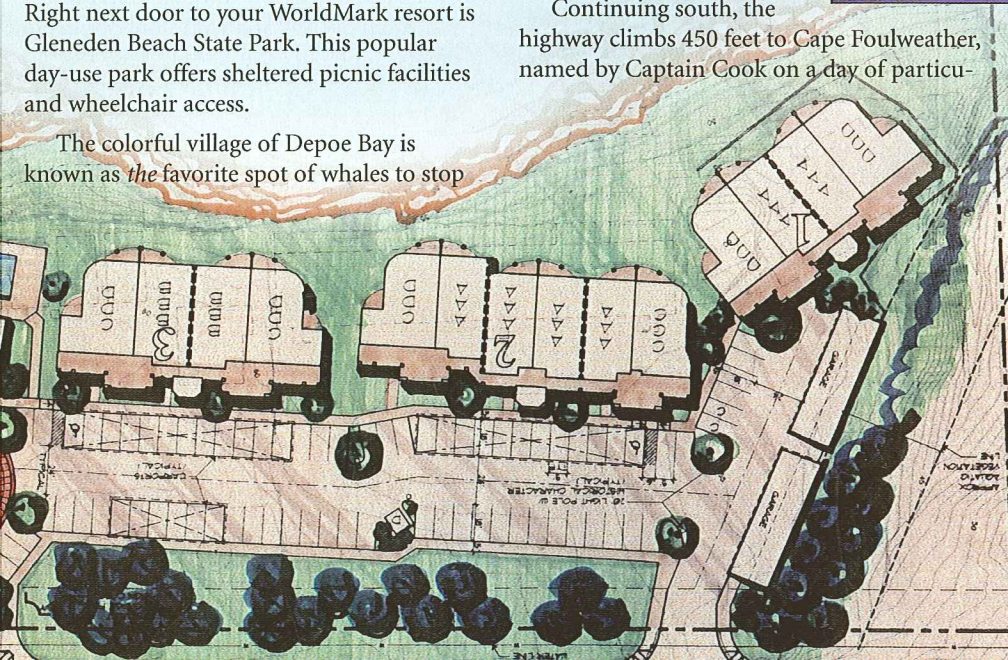
Newport is known for its tranquil harbor under the graceful arches of the Yaquina Bay Bridge. The historic bayfront of Old Town is a working port with a fleet of commercial and charter fishing boats, canneries, gift shops and little "snack shacks" for feasting on the ocean's bounty. Visitor attractions include the Undersea Gardens, Wax Works Museum and Ripley's Believe It Or Not. Perhaps the best place to appreciate all the coast has to offer is The Oregon Coast Aquarium, a "must-see." The four-acre outdoor exhibit area is a manmade rocky coast

with replica habitats for seals, sea otters and sea lions. Flying seabirds enjoy the aquarium's walk-through, open-air aviary, North America's largest. The Hatfield Marine Science Center is also here. It offers informational displays and intriguing marine animals,

some of which you can touch. Guarding the bay is a familiar landmark—the Yaquina Bay Lighthouse. Yaquina Bay Bridge and State Park offers tours of the historic bridge, dedicated in 1936. You'll find the restored Yaquina Bay Lighthouse within the park's boundaries at the north end of the bridge.



Bridge to Depoe Bay



Get in touch with Oregon ...

Fishing information	(800) ASK-FISH
Road/weather conditions	(800) 977-6368
Oregon Tourism Commission	(800) 547-7842
.....	www.traveloregon.com
Oregon Coast Visitors Assoc.	(888) 628-2101
.....	www.netbridge.net/ocva
Lincoln City Visitor & Convention Bureau	(800) 452-2151
Newport Chamber of Commerce....	(800) 262-7844
.....	www.newportnet.com